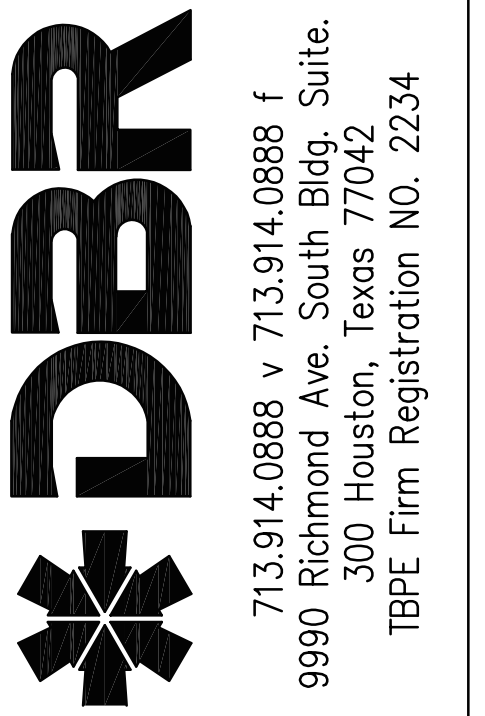
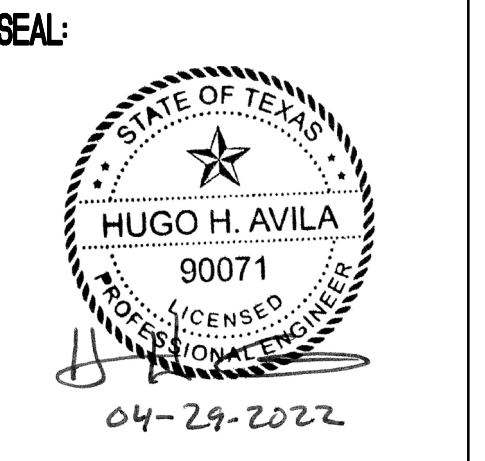


# City of Edinburg Waste Water Treatment Plant Pump Addition



REVISION No.	DATE	DISCUSSION



**City of Edinburg**  
**Waste Water Treatment Plant**  
**Pump Addition**  
 1202 NM Rd., Edinburg, Tx. 78539

100% CONSTRUCTION DOCUMENTS

**PROJECT TEAM**

DBR Inc.  
200 s. 10th St  
Suite 901  
McAllen, Texas 78501

O: 956-683-1640

MEP Engineer  
HUGO H. AVILA, PE  
[havila@dbrinc.com](mailto:havila@dbrinc.com)

City of Edinburg  
415 W University Dr.,  
Edinburg, Texas 78539

City of Edinburg Project Manager  
Arturo Martinez  
Director of Water Resources  
o: 956-388-8212

**LOCATION**



1202 N M Rd.,  
Edinburg, Texas 78539



PUMP  
LOCATION

**SHEET LIST TABLE**

Sheet Number	Sheet Title
G0.0	COVER SHEET
EP1.01	ELECTRICAL/PLUMBING SITE PLAN
EP2.11	ELECTRICAL/PLUMBING PLAN
EP4.01	ELECTRICAL ONE-LINE DIAGRAM
EP6.01	ELECTRICAL AND PLUMBING DETAILS

DATE: 01/26/2022  
 DRAWN BY: DBR  
 CHECKED BY: DBR  
 PROJECT NUMBER: 218031.000  
 SHEET TITLE: COVER SHEET

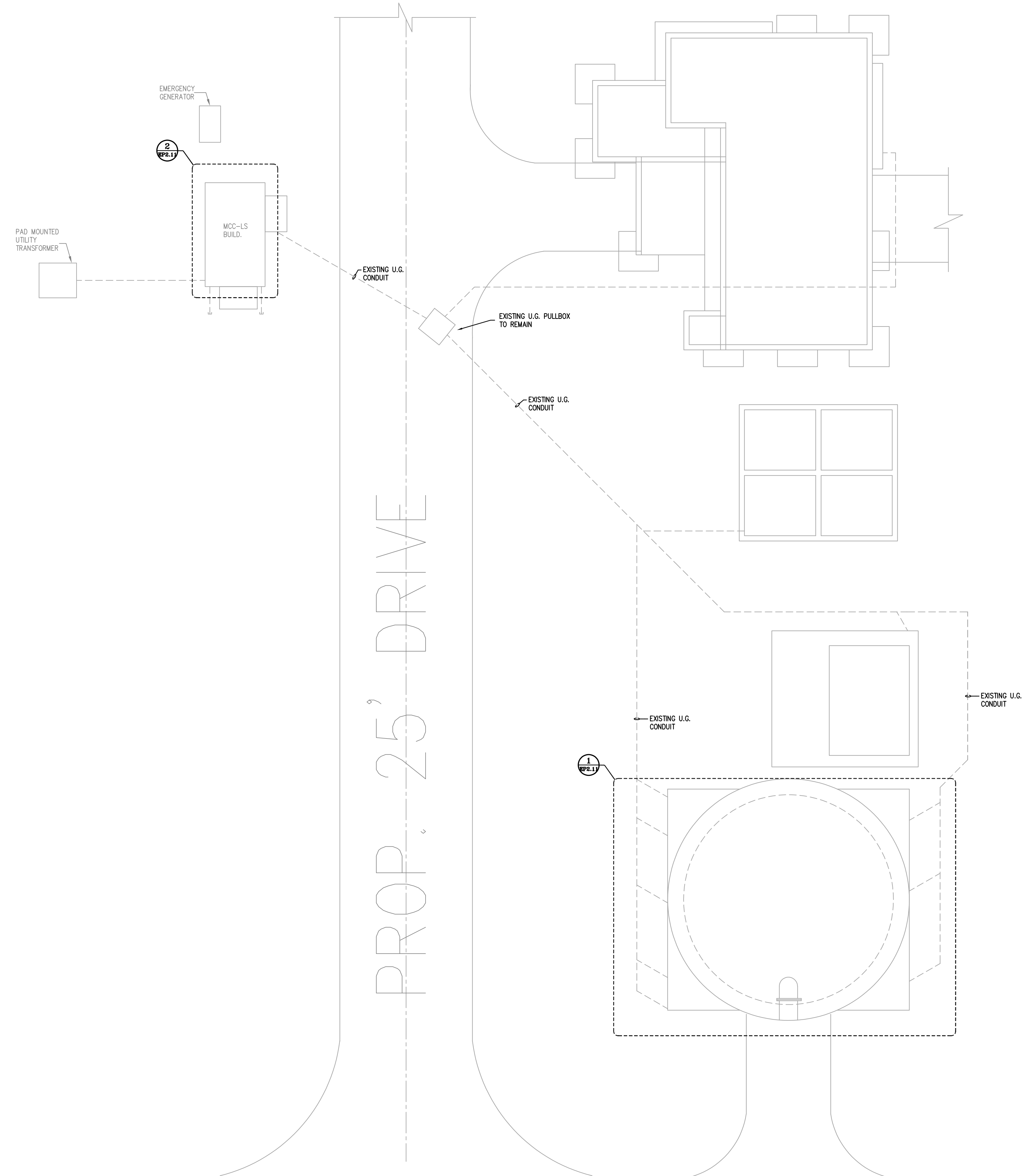
SHEET NUMBER: **G0.01**



DBR Project Number	218031.000
HA	PLBG

Plotted: Jan 31, 2022, 2:27 PM by user: rjleina - Saved: 1/31/2022 by user: rjleina  
 C:\Users\rjleina\ACCDocs\DBR Inc\218031.000 - Edinburg Elec-Waste Water Trmt\Project Files\Drawings\EP-218031-01.dwg

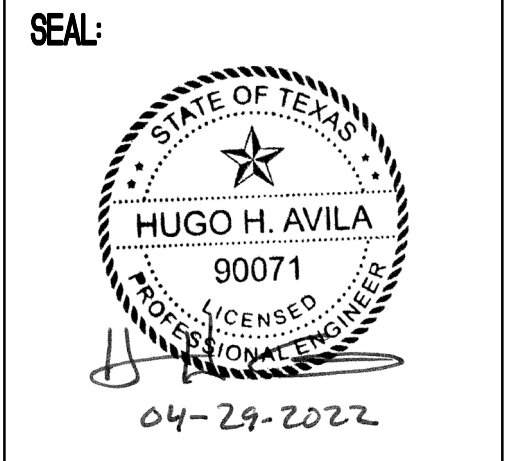
Plotted: Jan 31, 2022, 2:58 PM by user: rjleina - Saved: 1/31/2022 by user: rjleina  
 C:\Users\rjleina\ACCDocs\DBR Inc\218031.000 - Edinburg Elec-Waste Water Trmt\Project Files\Drawings\EP-218031-01.dwg



**1** ELECTRICAL/PLUMBING SITE PLAN  
 EPI.01 3/32" = 1'-0" **N**  
 NORTH



REVISION No.	DATE	DISCRIPTION



**City of Edinburg  
 Waste Water Treatment Plant  
 Pump Addition**  
 1202 NM Rd., Edinburg, Tx. 78539

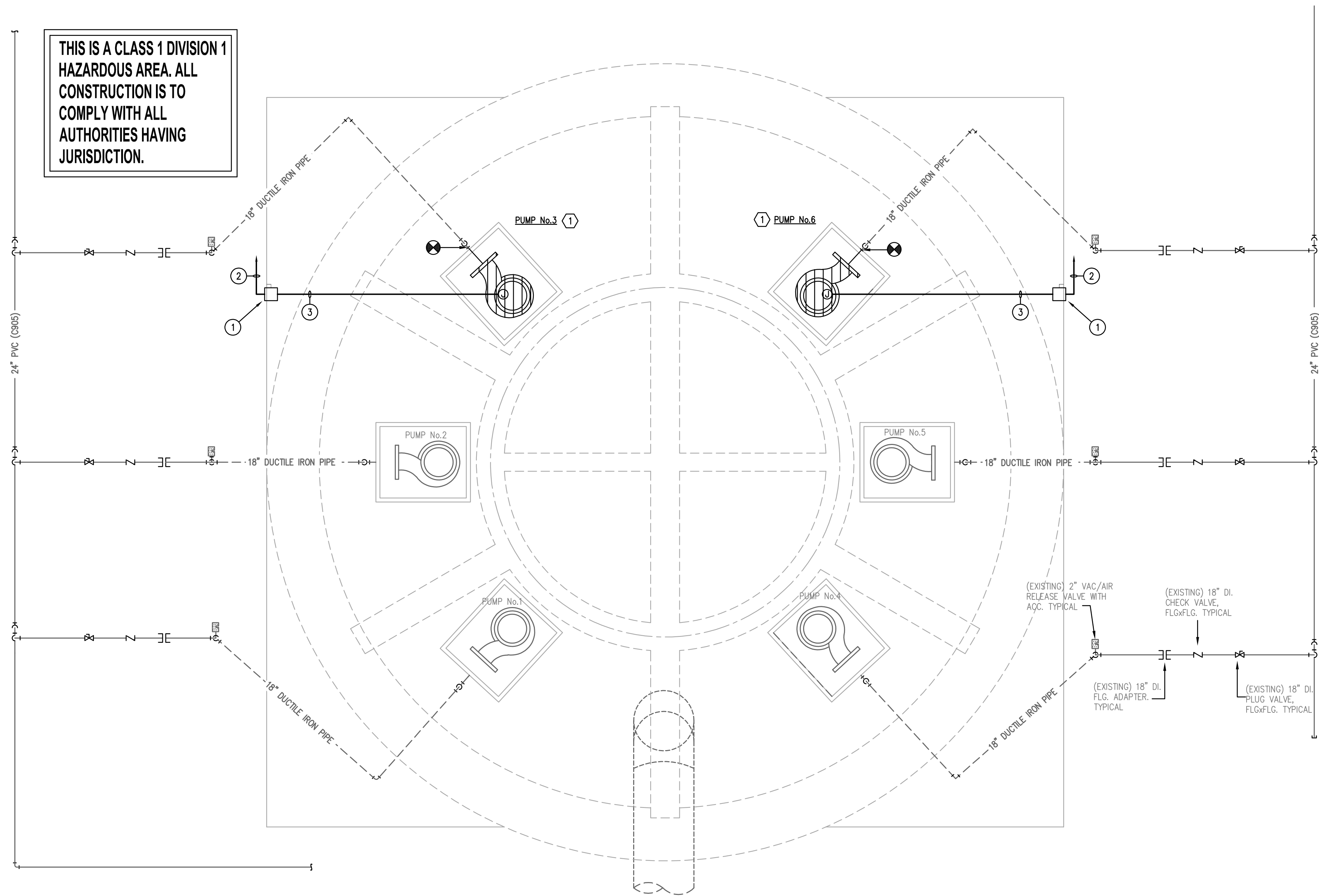
DATE: 01/26/2022  
 DRAWN BY: DBR  
 CHECKED BY: DBR  
 PROJECT NUMBER: 218031.000  
 SHEET TITLE:

**ELECTRICAL/  
 PLUMBING SITE  
 PLAN**

SHEET NUMBER:  
**EP1.01**

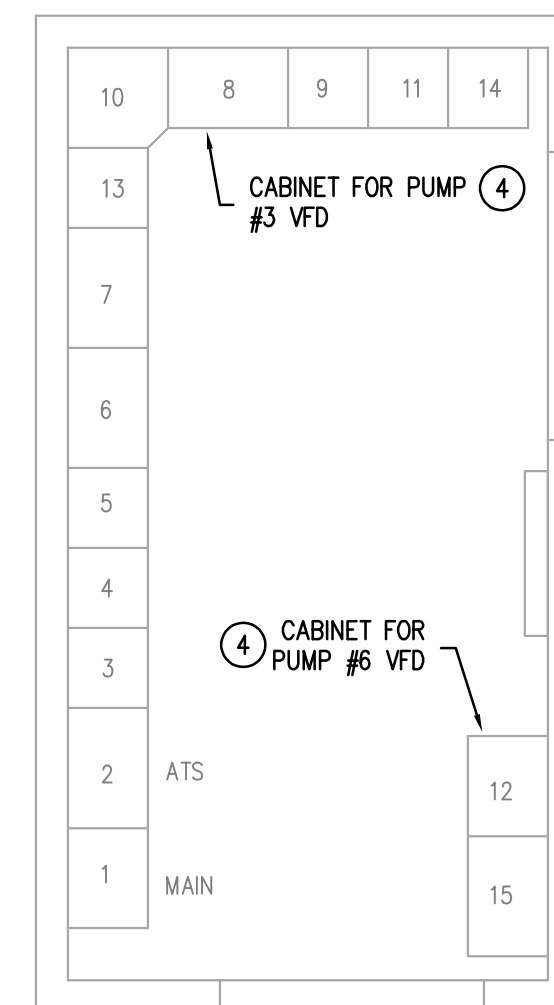
DBR Project Number 218031.000  
 HA --- PLBG ---

THIS IS A CLASS 1 DIVISION 1 HAZARDOUS AREA. ALL CONSTRUCTION IS TO COMPLY WITH ALL AUTHORITIES HAVING JURISDICTION.



**1** LEVEL 1 ELECTRICAL/PLUMBING PLAN - LIFT STATION  
EP2.11 1/4" = 1'-0" NORTH

**2** LEVEL 1 ELECTRICAL/PLUMBING PLAN - MCC-LS BUILD.  
EP2.11 1/4" = 1'-0" NORTH



**PLUMBING GENERAL NOTES:**

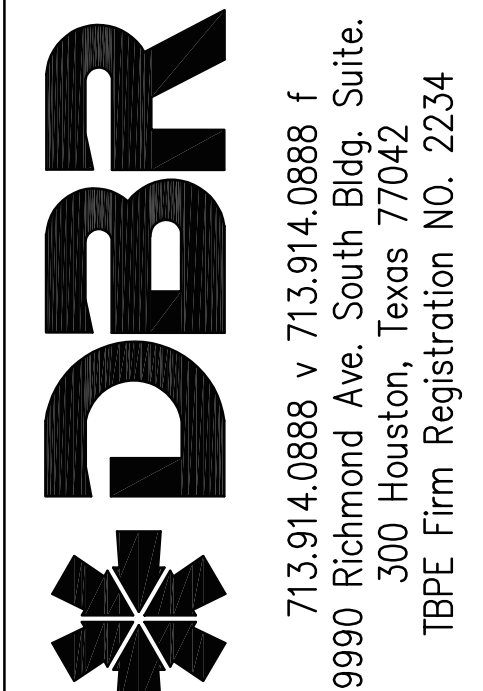
- A. DRAWING IS DIAGRAMMATIC ONLY. CONTRACTOR SHALL COORDINATE EXACT LOCATIONS OF PIPING, DEVICES AND EQUIPMENT WITH BUILDING ELEMENTS AND THE WORK OF OTHER TRADES.
- B. PROVIDE ALL MATERIALS AND LABOR TO INSTALL AND MAKE FINAL CONNECTIONS TO ALL EQUIPMENT. ALL CONNECTIONS FOR EQUIPMENT TO BE IN ACCORDANCE WITH APPLICABLE SECTIONS OF HEALTH DEPARTMENT AND PLUMBING CODES.
- C. FIELD VERIFY AS NECESSARY THE EXACT LOCATION, SIZE, DEPTH BELOW FLOOR/HEIGHT ABOVE GRADE, ROUTING, DIRECTION OF FLOW, CAPACITY, PIPE MATERIAL, AND CONDITION OF EXISTING PIPING. MAKE ADJUSTMENTS AS REQUIRED.

**PLUMBING KEYED NOTES:**

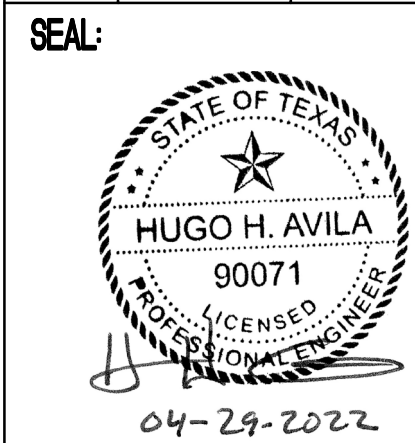
1. PROVIDE LIFT STATION PUMP EQUAL TO FLYGT MODEL NP-3306.665, 12" VOLUTE SUBMERSIBLE PUMP EQUIPPED WITH A 460/3/60 100 HP EXPLOSION PROOF MOTOR, 870/465 MM IMPELLER, FLS SENSOR IN CABLE ENTRY AND MOTOR HOUSING, PT-100 THERMAL SENSOR IN STATOR WINDING AND LOWER BEARING, WITH 1X50' CABLE, SUBCAB AWG 1/3-2-1-GC (POWER) AND 1X50' CABLE, SUBCAB S12X1.5 (PILOT).

**ELECTRICAL KEYED NOTES:**

1. FLOOR SUPPORTED 200A/3P/600V, HEAVY DUTY, CLASS 1, DIVISION 1, HAZARDOUS AREA DISCONNECT SWITCH. PROVIDE TERMINAL STRIP INSIDE DISCONNECT SWITCH TO TERMINATE PUMP SEAL FAIL AND OVERTEMP SUPPLIED IN CABLE TO CONTROLS WIRING RUNNING BACK TO MOTOR STARTER IN MSS-LS. SEE DETAIL 2/EP6.01
2. 3#2/0, 1#4GND, IN EXISTING 3" CONDUIT (PUMP MOTOR FEEDER TO MCC-LS), 6#12 IN SEPARATE EXISTING CONTROLS CONDUIT (PUMP SEAL FAIL, OVERTEMP, AUX SWITCH @ DISC. SWITCH TO MCC-LS CONTROLS SECTION).
3. EMPTY 2" CONDUIT WITH PULLWIRE (CABLE FROM PUMP TO DISCONNECT SWITCH TO BE SUPPLIED BY PUMP VENDOR).
4. EXISTING SQUARE D MODEL 6 MOTOR CONTROL CENTER. CONTRACTOR SHALL PROVIDE NEW LIFT STATION PUMP VFD. COORDINATE THE NEW VFD WITH THE EXISTING CABINET TO ENSURE COMPATIBILITY BEFORE ORDERING.



REVISION No.	DATE	DISCUSSION



City of Edinburg  
Waste Water Treatment Plant  
Pump Addition  
1202 NM Rd., Edinburg, Tx. 78539

DATE: 01/26/2022  
DRAWN BY: DBR  
CHECKED BY: DBR  
PROJECT NUMBER: 218031.000  
SHEET TITLE:

LEVEL 1 ELECTRICAL/PLUMBING PLAN

SHEET NUMBER:

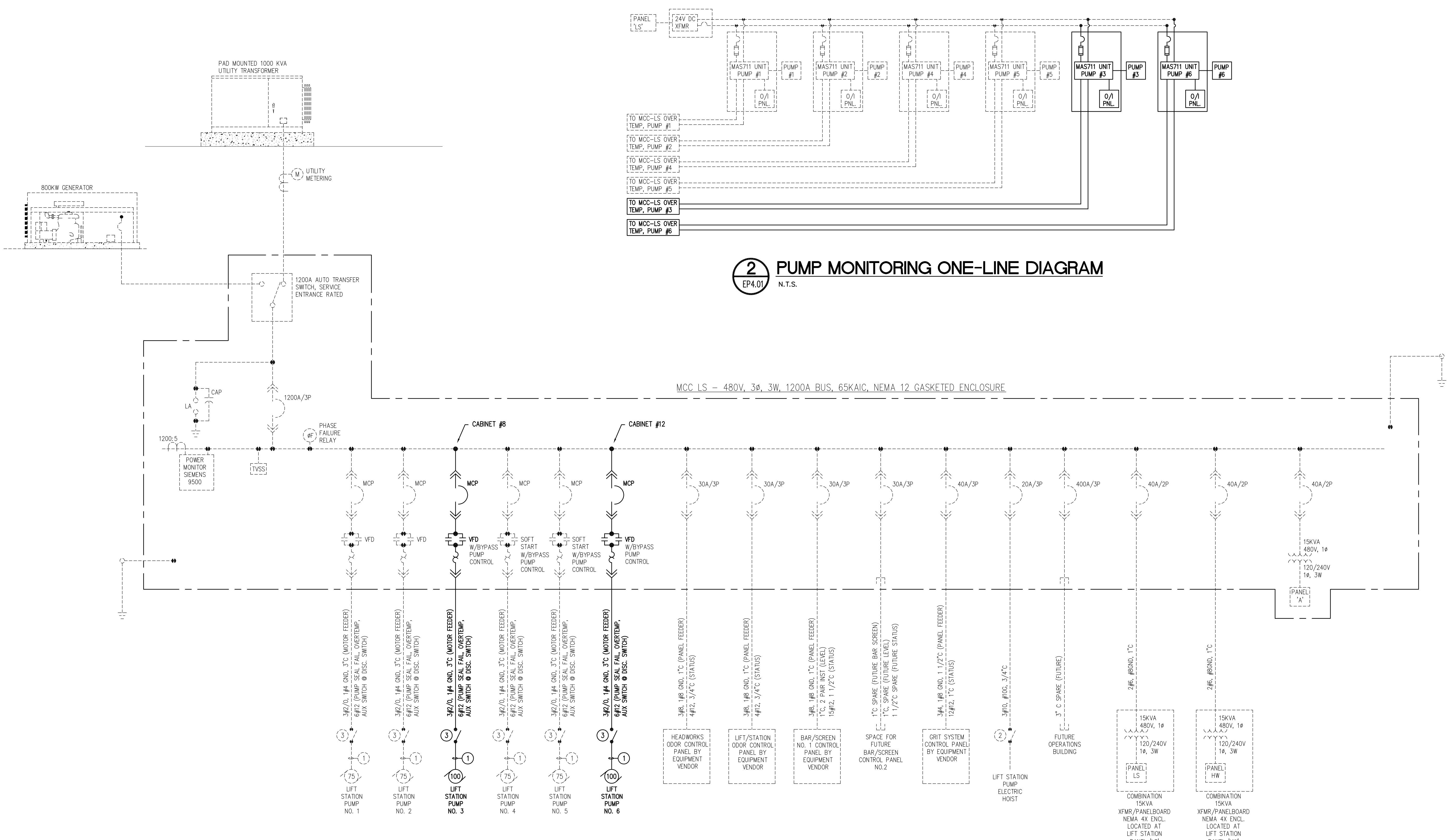
EP2.11



DBR Project Number	218031.000
HA	PLBG

Plotted: Jan 31, 2022, 2:10 PM by user: rjefina - Saved: 1/31/2022 by user: rjefina  
C:\Users\rjefina\ACCDocs\DBR Inc\218031.000 - Edinburg Elec-Waste Water Trmt\Project Files\Drawings\EP-218031-02.dwg

Plotted: Jan 31, 2022, 2:11 PM by user: rjgibna - Saved: 1/26/2022 by user: jbelz  
 C:\Users\rjgibna\ACCDos\DBR\nc218031.000 - Edinburg Elec-Waste Water Trmt\Project Files\Drawings\0EP-218031-SCHEDULES AND DETAILS.dwg



**2 PUMP MONITORING ONE-LINE DIAGRAM**  
 EP4.01 N.T.S.

MCC LS - 480V, 3ø, 3W, 1200A BUS, 65KAIC, NEMA 12 GASKETED ENCLOSURE

- ELECTRICAL KEYED NOTES:**
- ① CABLE SUPPLIED WITH PUMP.
  - ② 30A/3P/600V, HEAVY DUTY, CLASS 1, DIV. 1 HAZARDOUS AREA DISCONNECT SWITCH.
  - ③ 200A/3P/600V, HEAVY DUTY, CLASS 1, DIV. 1 HAZARDOUS AREA DISCONNECT SWITCH.

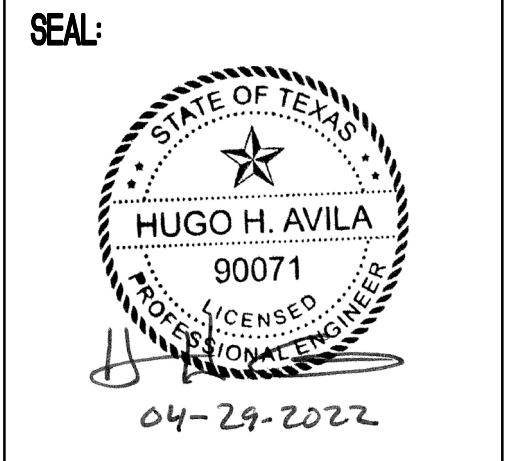
**1 ELECTRICAL ONE-LINE DIAGRAM**  
 EP4.01 N.T.S.

**NOTE:**  
 DASHED ITEMS ARE EXISTING TO REMAIN. SOLID LINES ARE NEW WORK.



**REVISION:**

No.	DATE	DISCRIPTION



**City of Edinburg  
 Waste Water Treatment Plant  
 Pump Addition**  
 1202 NM Rd., Edinburg, Tx. 78539

**DATE:** 01/26/2022  
**DRAWN BY:** DBR  
**CHECKED BY:** DBR  
**PROJECT NUMBER:** 218031.000  
**SHEET TITLE:**

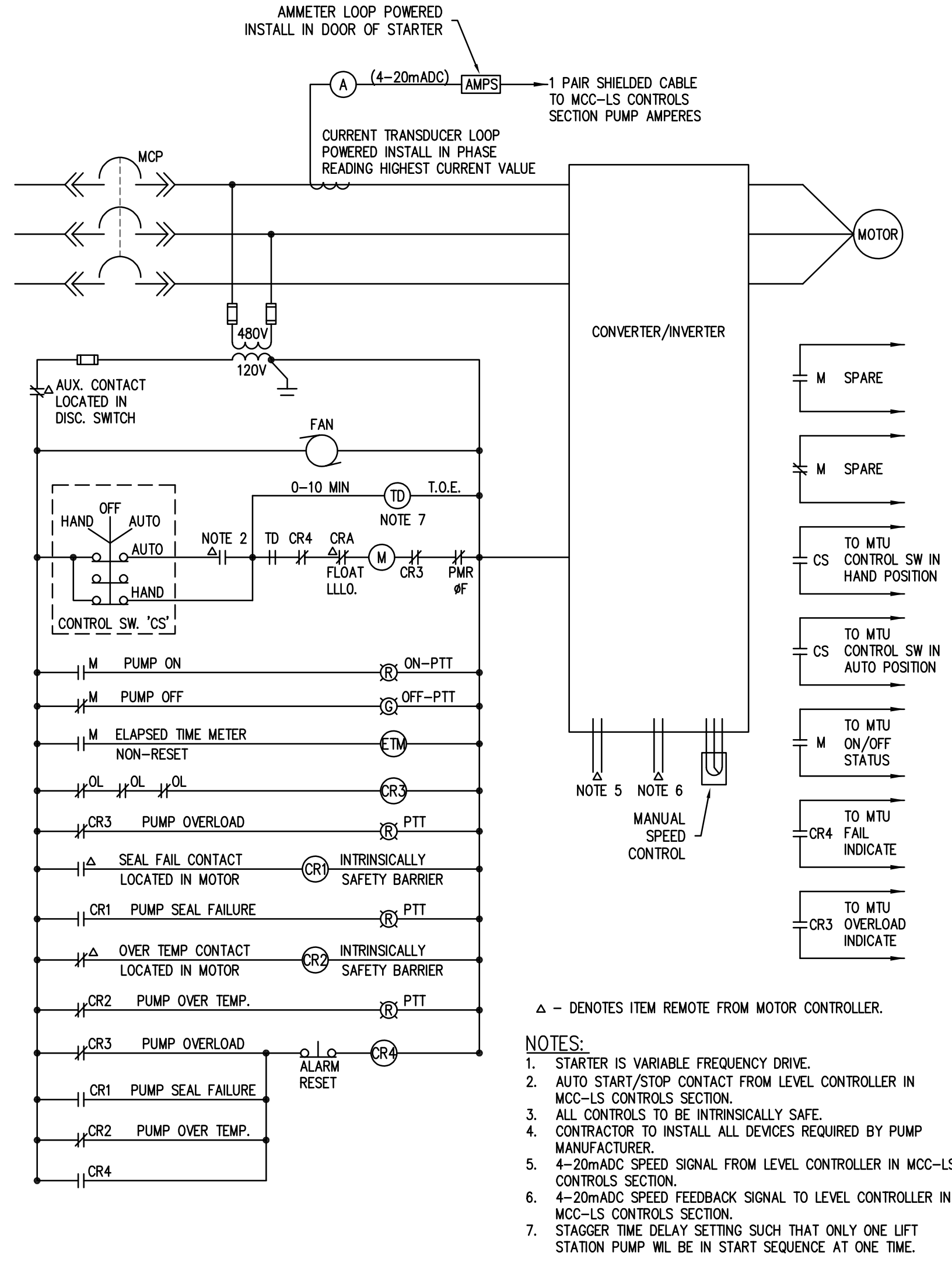
**ELECTRICAL AND PLUMBING DIAGRAMS**

**SHEET NUMBER:**  
**EP4.01**

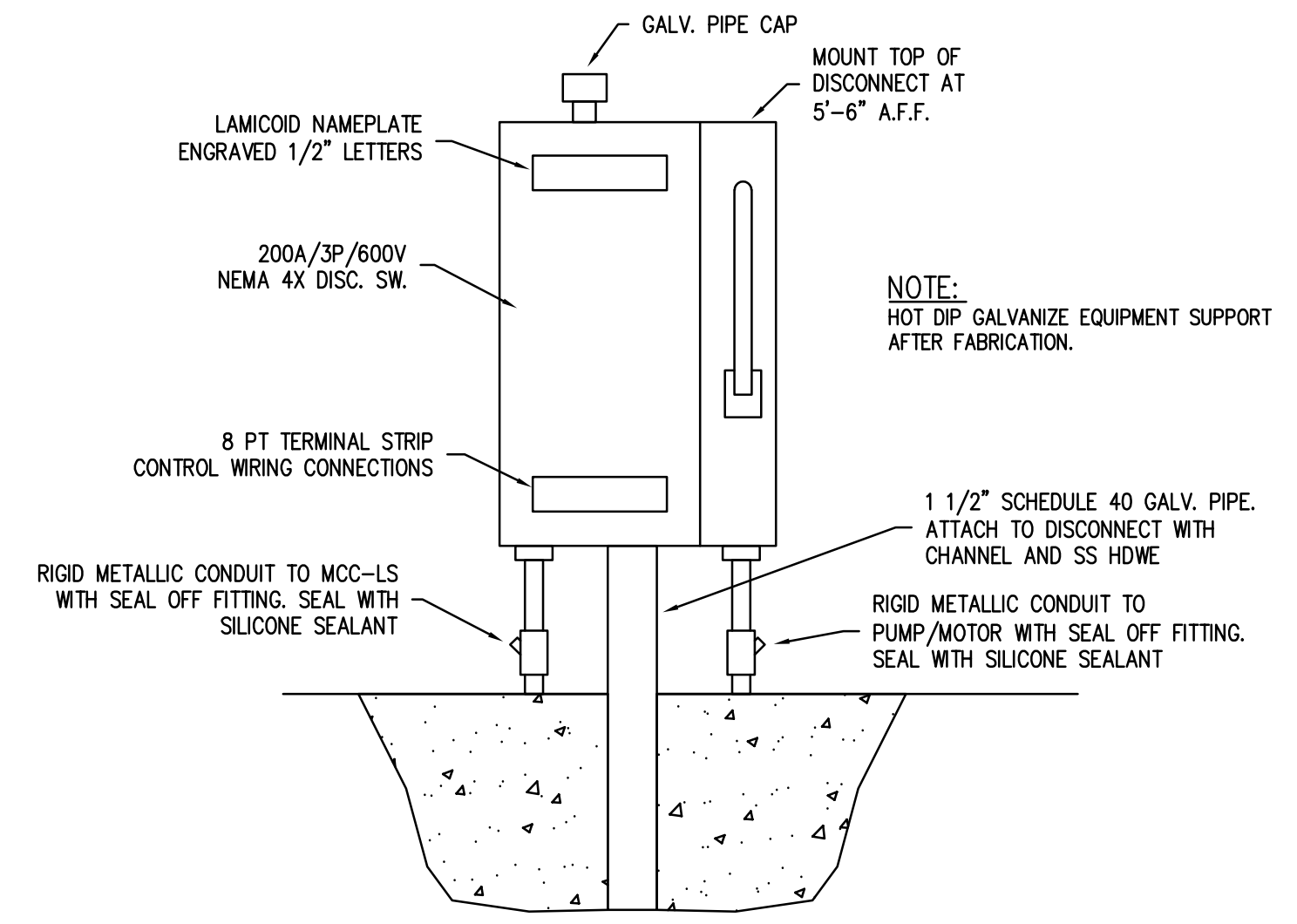


DBR Project Number 218031.000  
 HA --- PLBG ---

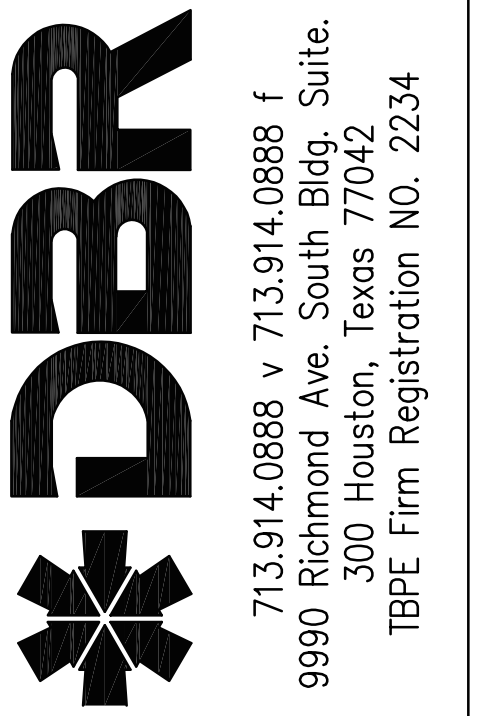
Printed: Jan 31, 2022, 2:12 PM by user: rjgibson - Saved: 1/26/2022 by user: jbelz  
 C:\Users\rjgibson\OneDrive\Documents\DRB\mcc218031.000 - Edinburg Elec-Waste Water Trim\Project Files\Drawings\EP-218031-SCHEDULES AND DETAILS.dwg



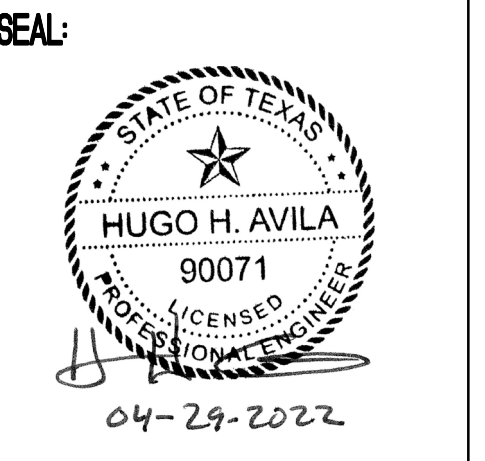
**1** VFD WIRING DIAGRAM - TYPICAL FOR PUMP #3 AND #6  
 EP6.01 N.T.S.



**2** TYPICAL POST MOUNTED DISCONNECT SWITCH - FRONT ELEVATION  
 EP6.01 N.T.S.



REVISION No.	DATE	DISCUSSION



**City of Edinburg  
 Waste Water Treatment Plant  
 Pump Addition**  
 1202 NM Rd., Edinburg, Tx. 78539

DATE:	01/26/2022
DRAWN BY:	DBR
CHECKED BY:	DBR
PROJECT NUMBER:	218031.000
SHEET TITLE:	ELECTRICAL AND PLUMBING DETAILS
SHEET NUMBER:	EP6.01



DBR Project Number	218031.000
HA	PLBG